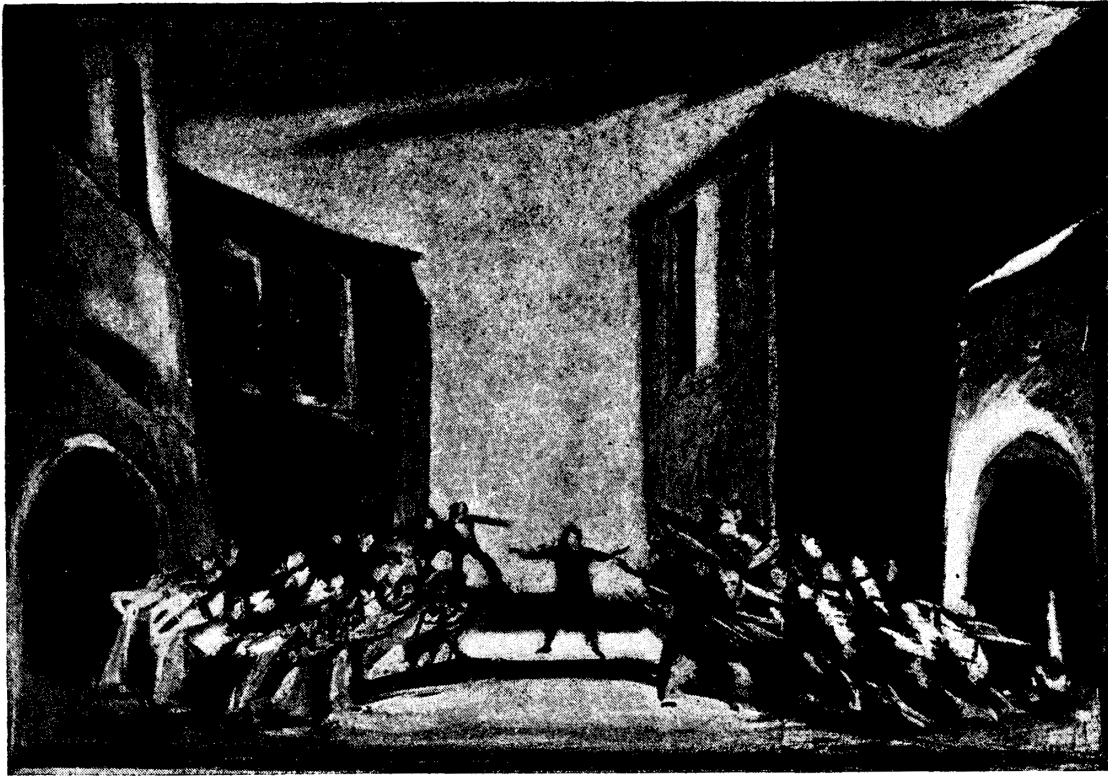




CARDILLAC, ACT 2

This design for the Munich production of Paul Hindemith's opera was made by Leo Pasetti. It represents the home of Cardillac, a jeweler whose avarice for treasure leads him to murder the customers lured to this hoarding place. His final victim is his daughter's lover.



CARDILLAC, ACT 3

Pasetti's projection of the scene in the street, after the jeweler has been unmasked. Despite the violently dramatic libretto, Hindemith austerey refrained from realism in his music, having introduced strict contrapuntal forms into this score and departed in many other notable respects from the opera of tradition.